



# Implantology

Bone Grafting Product	92
Sinus Lift Instrument	94
Periotome / Elevator	95
Measuring Device	96
Resin Color Probe	97
Titanium Instrument	98



No. 30495  
(3 ea.)

- \*Collect own born like shaving allows less surgical invasive.
- \*Clear body allows how much you scraped own born inside to be visible.
- \*Suitable angle of the tip part allows easy to scrape bone.



Size / 155mm

\*Capacity / approx. 1cc  
\*Width of blade / 6.4mm  
\*Material / TPX

## Bone Mill

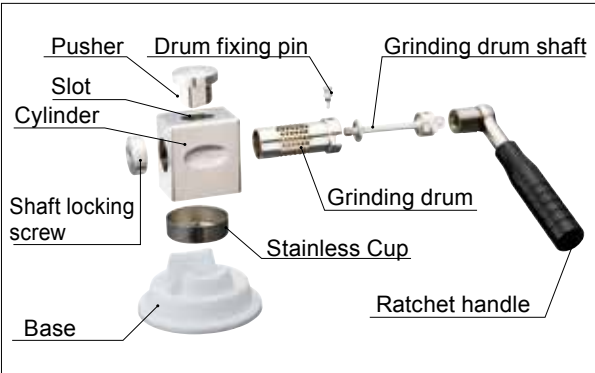
-ex-2-

No. 30480



\*Size / 26 x 17mm (Slot)  
\*Material / Radel R (Base)  
Bakelite (Black part of handle)

### Name of Parts



- \*Able to comminute 0.1 to 1.0mm.
- \*Ratchet structure offers to comminute bones in just light power.
- \*Simple structure makes shorten your time for the preparation and cleaning of the operation.

## Graft Carrier

\*Used for transferring of a autologous bone or an artificial bone under implant treatment.



No.	Description	Diameter (mm)	Capacity (cc)
30462	ø2.9	ø2.9	0.02
30463	ø3.4	ø3.4	0.03

## Dissector

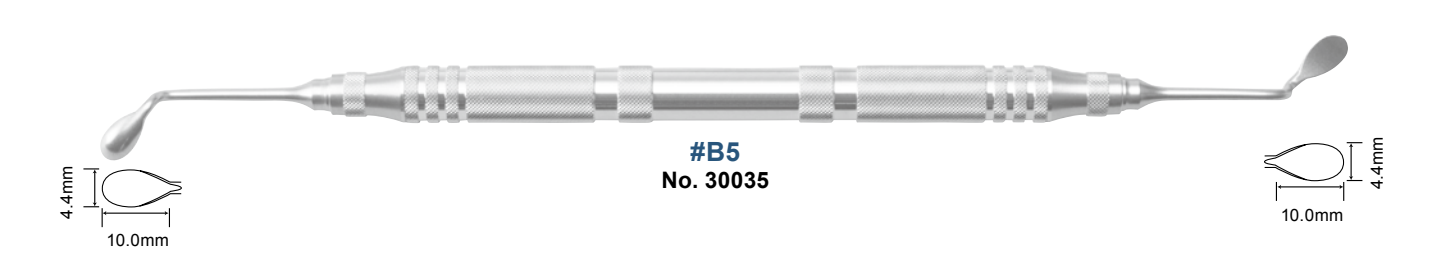
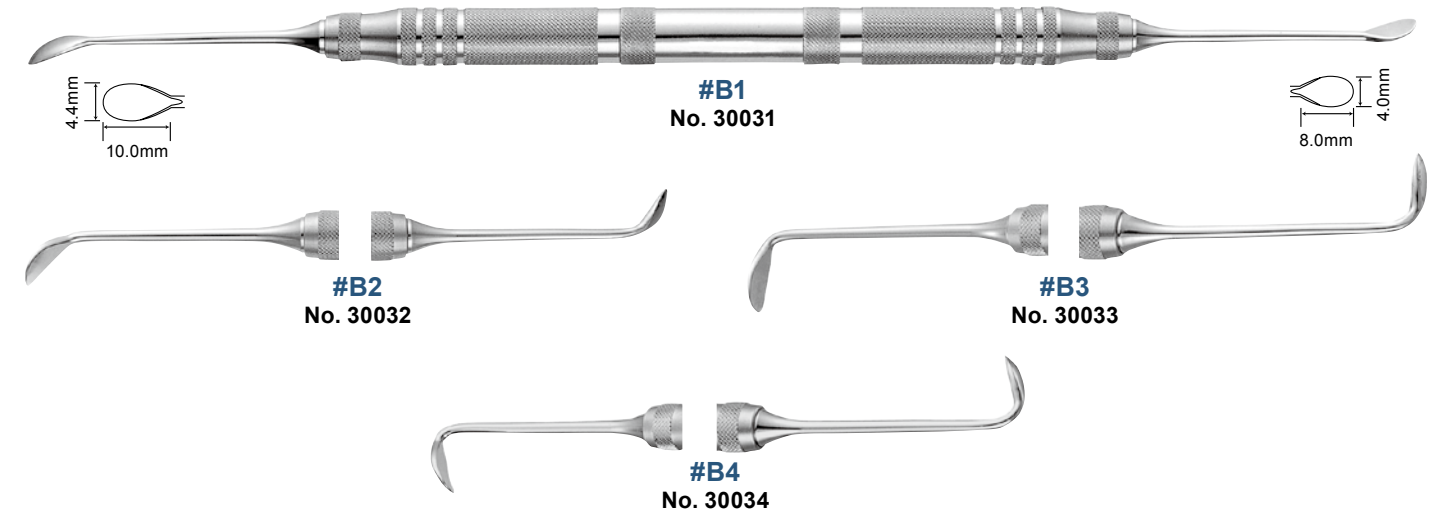
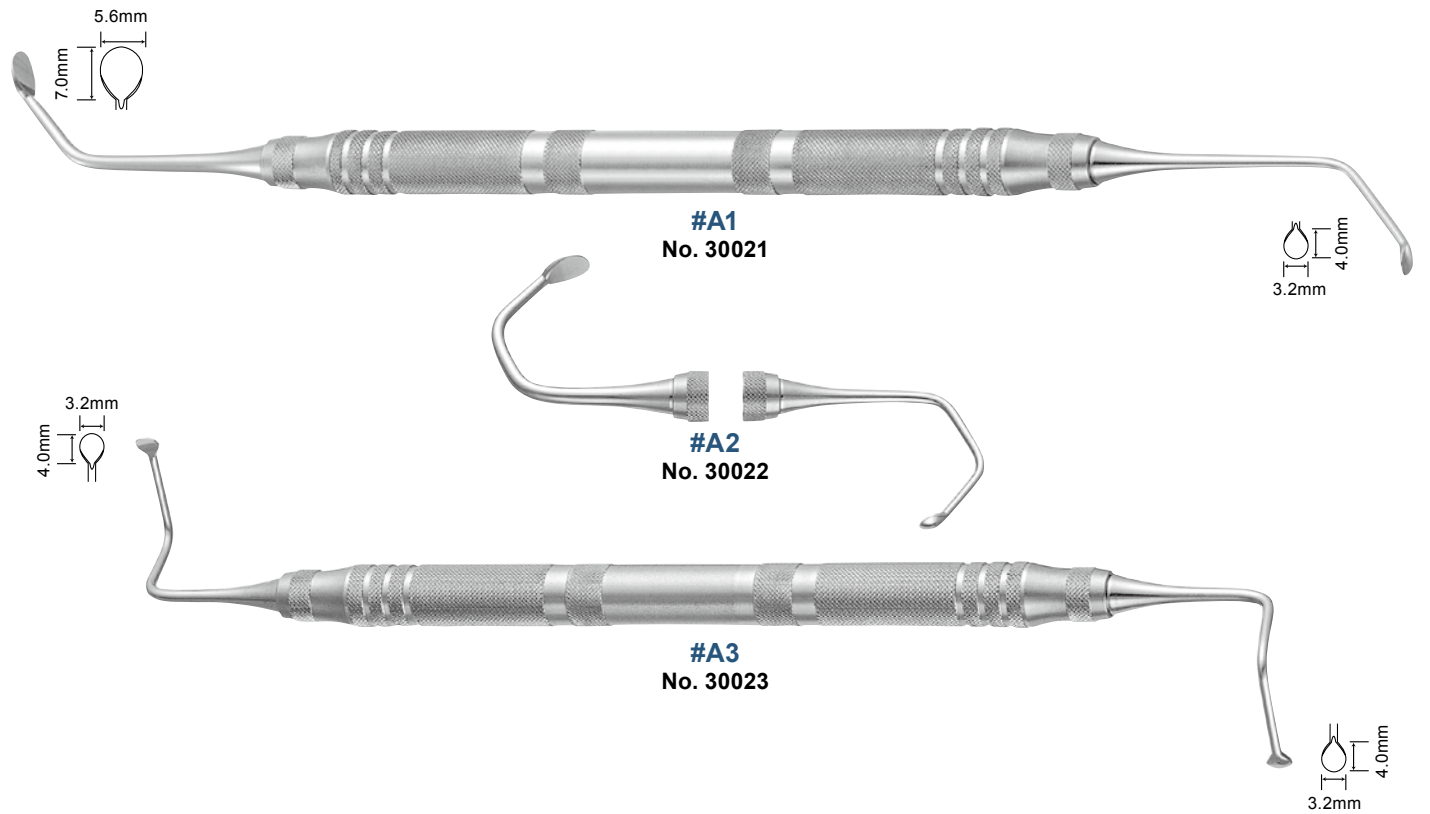
\*Used to mark on the gum before cut.

No. 30020





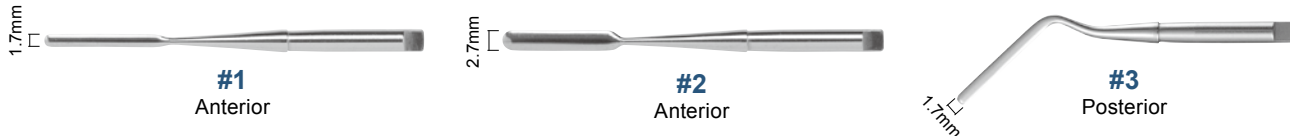
- \*Smooth edges to prevent Schneider's membrane from damages.
- \*Easy control angle design.
- \*Suitable for searching bone deeper inside maxillary sinus.



## Periotome

- \*Able to operate extraction with minimum damage to surrounding periodontal tissues.
- \*Excellent for immediate implantation.

### -Point-



### -Handle-



No.	Description
30016	Point #1
30017	Point #2
30018	Point #3
10201	P-A Handle

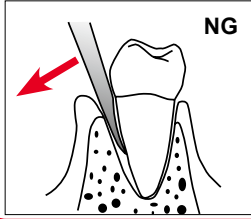
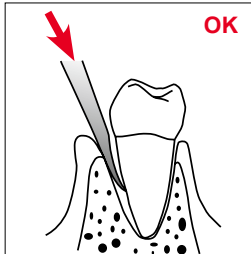
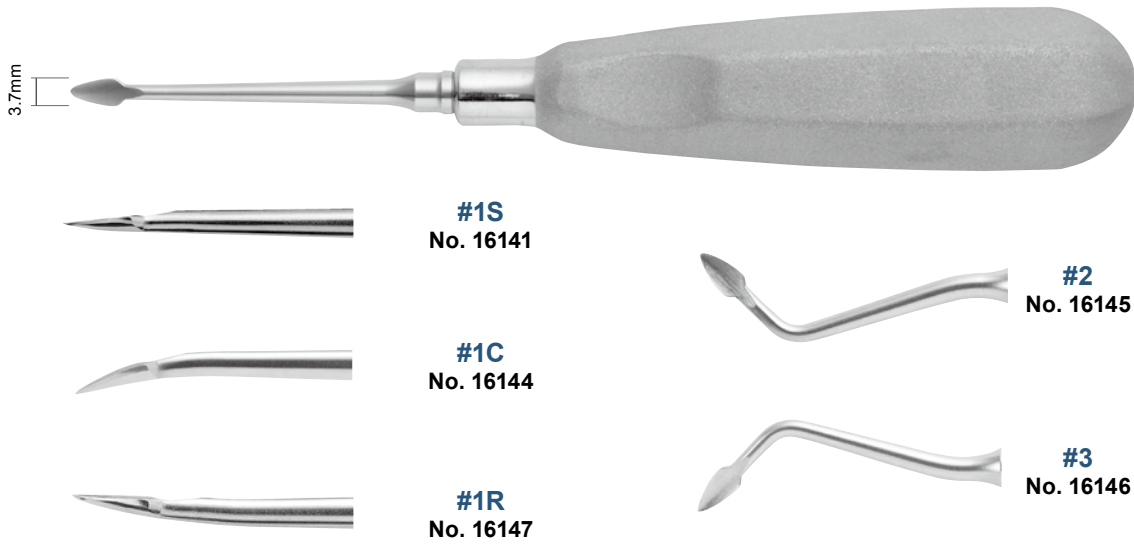
## Elevator

### -B Handle Spear-



- \*With a thin spear-like tip can insert in narrow periodontal membrane cavity easily, and periodontal ligament fibers are cut and it exfoliates.
- \*Excellent for immediate implantation.

\*Since this product is an instrument which cuts a periodontal ligament and carries out extrusion of a tooth by wedge action, the blade is very thin. Therefore, please do not perform operation in which a root is raised by leverage, there are possibility of the breakage of blade and fear of distortion.

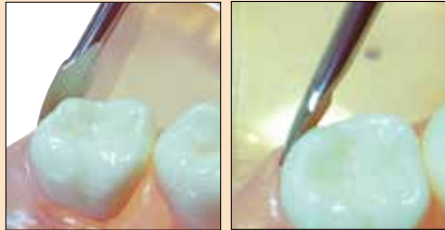


[ #1C (Curve) ]



\*The curve of the tip can approach the "molar" smoothly.

[ #1R (Reverse) ]



\*Inside curve of the tip can approach the end of molar, lingual and palate side.

[ #2 #3 ]



\*This curved shape of a shank is suitably effective for "molar" to approach with ease.  
\*The tip is positioned on the extended line of the handle for handling balance. It makes Dr,s comfortable to keep the balance of operation.

No. 21122



## X-Ray Gauge

**Contents** Sleeve (2 ea.) / Gauge (2 ea.)

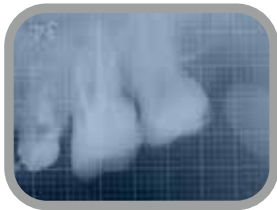
No. 21157



Sleeve



Gauge  
(1mm by 1mm with hold line every 5mm)



\*Suitable for root canal treatment, accurate examination before placing an implant, checking of calculus quantity and its area.

\*Size / W38 x D48 x H8.5mm (Sleeve)  
W33 x D45mm (Gauge)  
\*Material / Si (Sleeve)

- How to use -



## Periodontal Color Probe Tip (Replaceable Type)

-Tip (5 ea.)-

\*A probe made of the resin prevents implant and a prosthesis being damaged.  
\*Black and yellow color combination offers easy distinction of the scale.  
\*Because of the external diameter is only φ0.45mm, this product can reduce the burdens to periodontium.



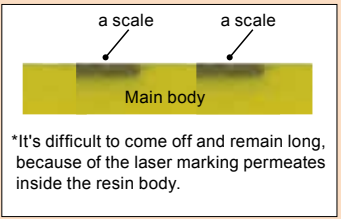
#2  
No. 23522



#4  
No. 23524



#5  
No. 23525



\*It's difficult to come off and remain long, because of the laser marking permeates inside the resin body.

\*Material / PPSU

-Handle-



Octagonal  
No. 13121



SC  
No. 13127



YS  
No. 13128



Green  
No.13118



Blue  
No.13119



Pink  
No.13120

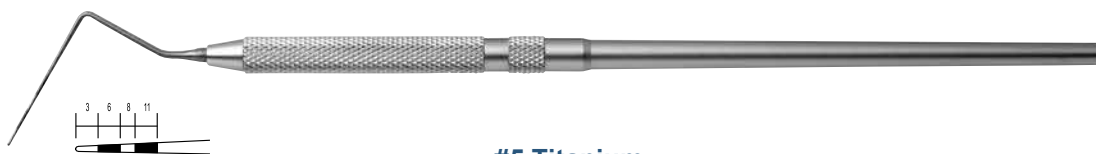
\*Material / POM





## Periodontal Probe

**\*Titanium**



**#5 Titanium**  
**No. 09575**



## Almighty Mouth Gag

**Contents** Main body, Tip (4 ea.)



**Adult**  
**No.14666**



\*Bite pressure / up to 1400N  
\*Material / Si (Tip)