



# Prosthetics

Impression Tray	110
Alginate Spatula / Plaster Spatula	114
Agar Syringe	115
Gingival Cord Packer	116
Impression Tray Product	117
Cement Spatula	118
Articulating Paper Holder	119
Contact Gauge	120
Setting / Removing Product	121



Net Tray

-Premium-  
\*Stainless Steel  
\*Stainless steel trays prevent corrosion and discolor after soaking in tray cleaner or disinfectant solution.

Full Arch

Upper

Lower

Finger rest (Upper)  
\*It provides finger position and prevents impression material to adhere onto finger.

No.	Description	Size (mm)				Color ring
		a	b	c	d	
19381	A for Upper	73	60	19.5	23	
19382	A for Lower	76	62	15	20	
19384	B for Upper	70	55	17	22	
19385	B for Lower	72	58	14.5	20	
19387	C for Upper	66	53	15	20	
19388	C for Lower	69	54	14	18	

\*Material / Si (Color ring)

Bi-Lateral

#11 / #13  
Upper Right / Lower Left

#10 / #12  
Upper Left / Lower Right

No.	Description	Size (mm)		Color ring
		a	b	
19391	#10	20	60	
19392	#11			
19394	#12	15	58	
19395	#13			

\*Material / Si (Color ring)

Local

Local Teeth  
No. 19396

One Tooth  
No. 19397

Color Tray

-Premium-  
\*Aluminium  
\*Color coded for easy identification.  
\*By an edge with height, the impression of a frenum or buccal mucous membrane can be taken firmly.  
\*Easily bendable for a custom fit.

Upper

Pink

Blue

Red

Gold

Violet

No.	Description	Size (mm)			
		a	b	c	d
19101	Pink	57	48	12	20
19102	Blue	62	54	12	20
19103	Red	68	60	12	22
19104	Gold	75	65	12	22
19105	Violet	84	70	13	22

Lower

Pink

Blue

Red

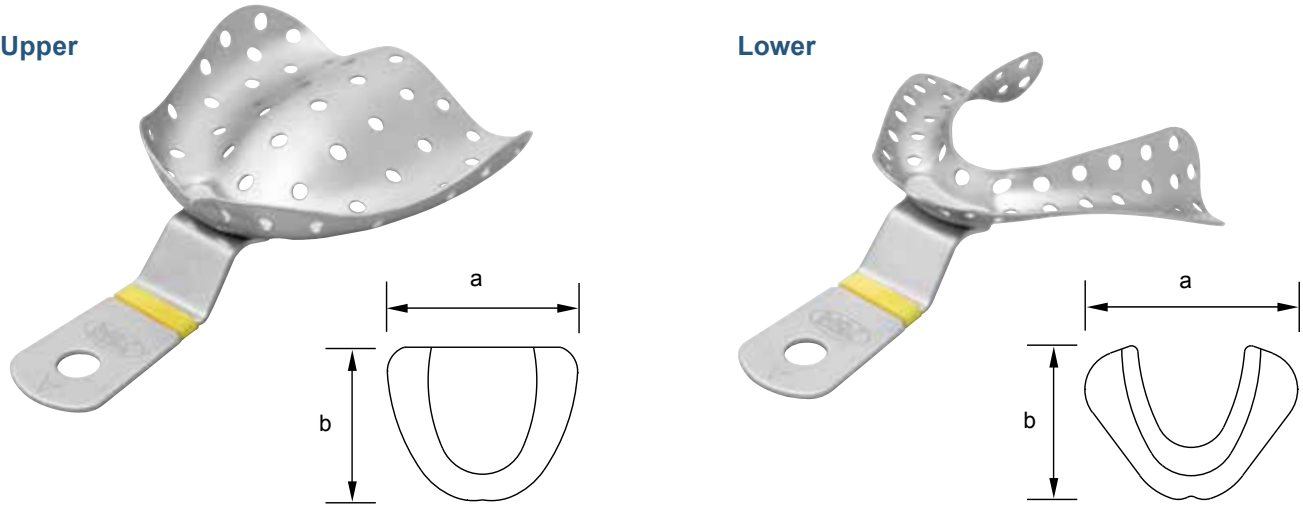
Gold

Violet

No.	Description	Size (mm)			
		a	b	c	d
19111	Pink	62	44	15	20
19112	Blue	70	48	15	20
19113	Red	75	50	15	20
19114	Gold	82	53	17	22
19115	Violet	88	55	17	22



-Edentulous Jaw-  
 \*Stainless Steel



No.	Description	Size (mm)		Color ring
		a	b	
19071	#UA	73	62	
19072	#UB	69	57	
19073	#UC	66	56	
19074	#UD	62	52	

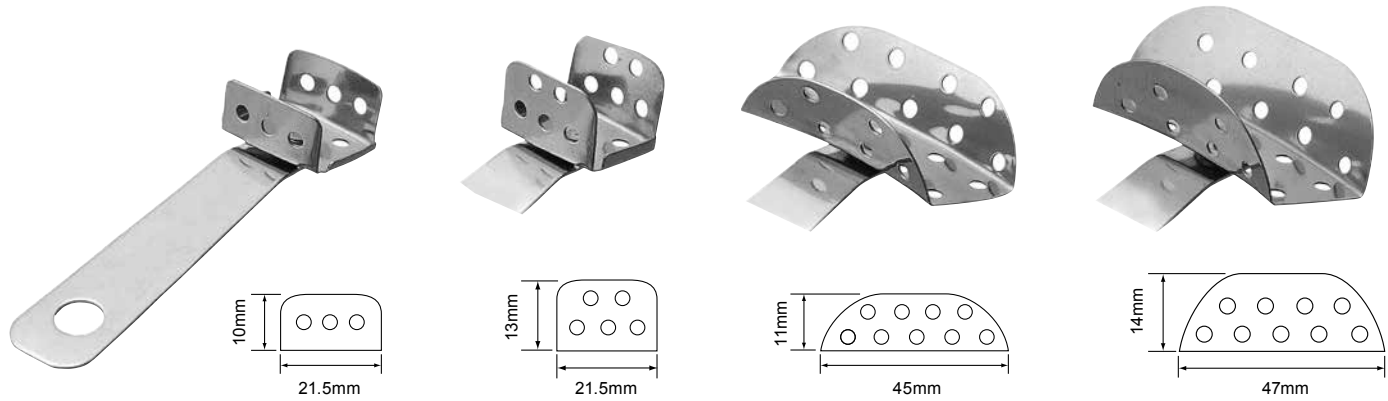
\*Material / Si (Color ring)

-Bi-Lateral-  
 \*Stainless Steel



## Rotating Tray

\*Stainless Steel



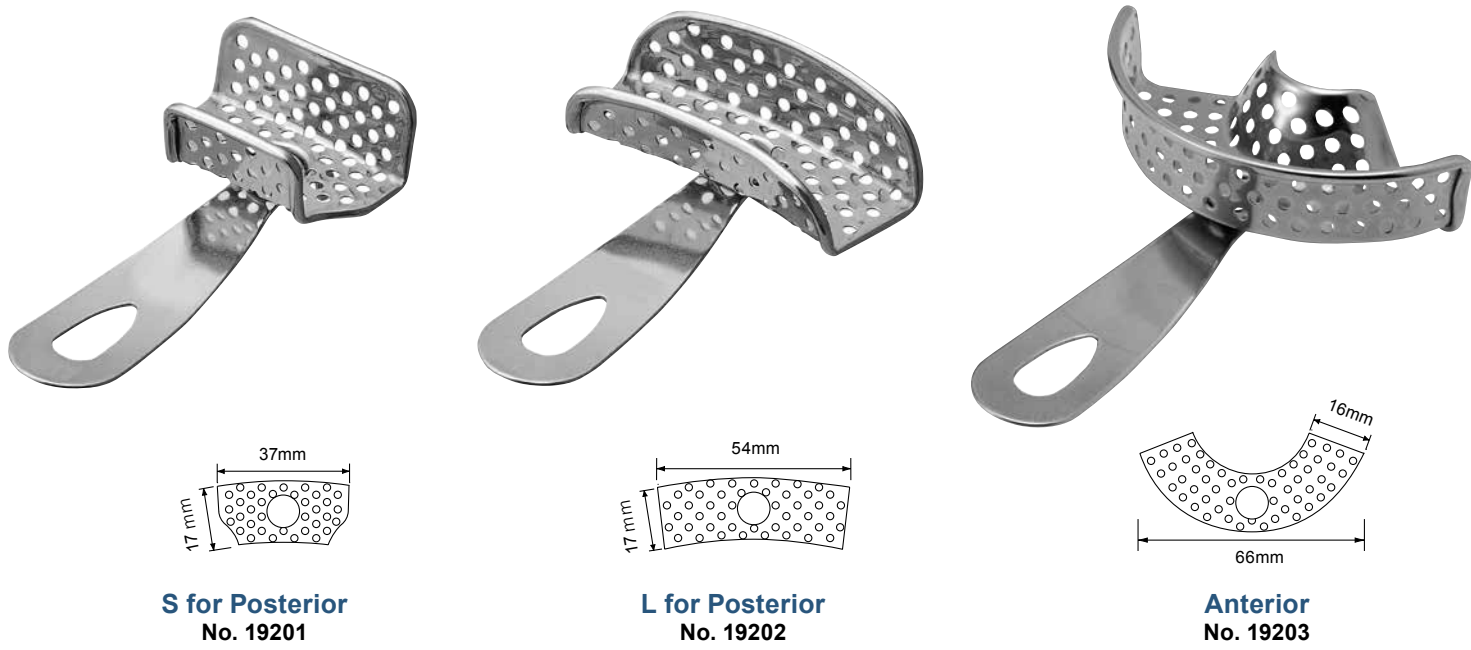
One Primary Tooth  
 No. 19461

One Permanent Tooth  
 No. 19463

Local Primary Teeth  
 No. 19465

Local Permanent Teeth  
 No. 19467

-Fusayama-  
 \*Stainless Steel





**#0.3 for Anterior  
No. 13107**

[ #0.3 for Posterior ]

[ #0.3 for Anterior ]

\*Only 1.2mm width of #0.3 for Anterior can approach to the lower anterior of gingival without damaging gum.

**#0.3 for Posterior  
No. 13108**

\*Thickness / 1.2mm (#0.3 for Anterior)  
1.6mm (#0.3 for Posterior)

---

\* "Same angle with explorer" for smooth access to the tooth surface.  
\* Combination of inside and outside tip surface for smooth approach into gingival.  
\* Excellent utility work for all the cords and positions.

**#0.3 Explorer Type  
No. 13100**

[ Clinical Movie ]

\*Thickness / 0.3mm

[How to use]

\*Outside surface for inserting the edge of cord.

\*Backside surface for inserting more part of cord.

\*Inside surface for the narrow space such as the space between the teeth.

---

\* Especially suitable for slippery silk-code and the difficult first-approach of insertion.

**#0.3 for Posterior T/C  
No. 13110**

\*Sprayed  
\*Thickness / 0.3mm

[ Clinical Movie ]

Sprayed edge part

\*Prevent from "slipping" and "fraying" the cord.

## Tray Spatula Type-3

**No. 11743**

Short side  
\*Used for detachment of plaster model from a tray.

Long side  
\*Used for removal of impression material from a tray.

\*Size / 200mm  
\*Material / ABS : Heatproof temperature 80°C (Handle)

## Alginate Cutter

\*Used for removal of impression material from a tray.

Spoon side

Spatula side

\*Size / 185mm  
\*Material / PS : Heatproof temperature 80°C

## Tray Tower Type-3

\*Used for drying plaster models.

**No. 13508**

\*Storage capacity / 6 ea. (Full arch type)  
\*Size / W123 x D180 x H165mm

**Sold Separately**

**Humidity Keeping Box  
No. 13509**

\*Size / W160 x D218 x H180mm

\*Helps minimize distortion in poured impression.  
\*Keeps humidity and prevents drying.





## Cement Spatula



#22  
No. 11522



#24  
No. 11524



#1  
No. 11551



#3  
No. 11553

## Articulating Paper Holder



Standard  
No. 11251



Offset  
No. 11256



PAT.

\*A view is secured by having the angle of 15° at the base of holding part.



with Pins  
No. 11250

### -Inter Teeth-



#1  
No. 27066



#2  
No. 27067

## Contact Gauge

### -with Handle-

- \*Gauge is stretched by holding both handles to insert into interproximal area.
- \*Identified by the color of gauges.

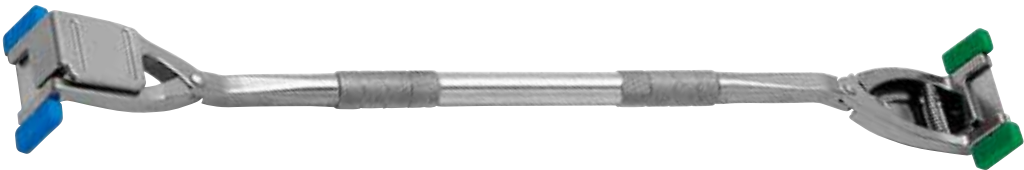
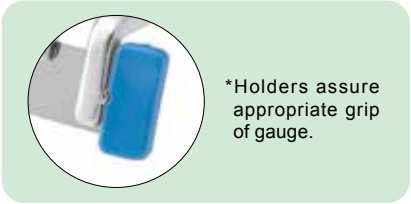


\*Size / 67mm  
\*Material / PP (Color part)

### -Double End Holder Set-

**Contents** Holder / Gauge 30μm (2 ea.), 50μm (2 ea.), 110μm

No. 21147



Size / 165mm

### -Single End Holder Set-

**Contents** Holder / Gauge 30μm (2 ea.), 50μm (2 ea.), 110μm

No. 21148



Size / 140mm

#### Individual Parts

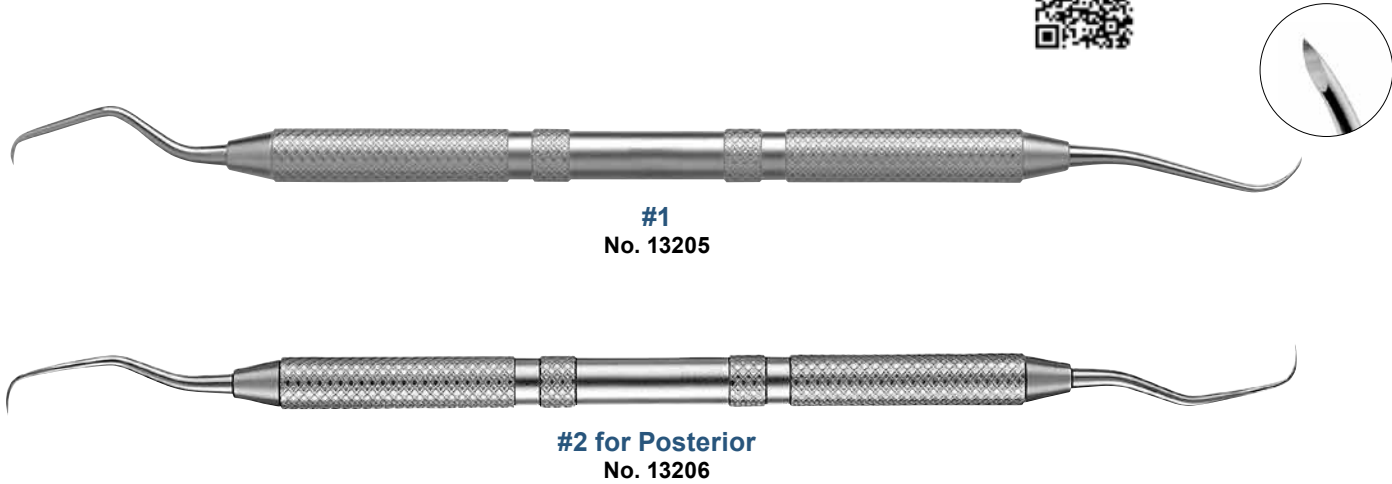
No.	Description
21142	Gauge 30μm Green (5 ea.)
21136	Gauge 50μm Blue (5 ea.)
21137	Gauge 110μm Yellow (5 ea.)
21138	Gauge 150μm Red (5 ea.)
21146	Double End Holder
21131	Single End Holder

#### Gauge



\*Used for both single-end and double-end handle.  
\*Material / POM (Color part)

## Surplus Cement Remover

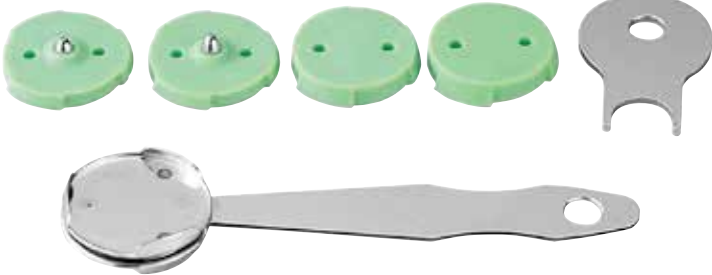


## Inlay Crown Setter Set

**Contents** Main body / Flat rubber (2 ea.) / Rubber with pin (2 ea.) / Driver

\*Prevents lift up of prosthesis by allowing patients to bite on this setter during cementing.

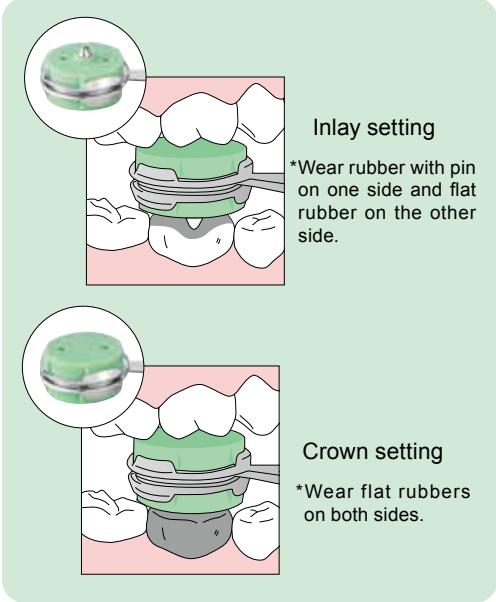
No. 13230



\*Material / Si (Green part)

#### Individual Parts

No.	Description
13231	Flat Rubber (2 ea.)
13232	Rubber with Pin (2 ea.)

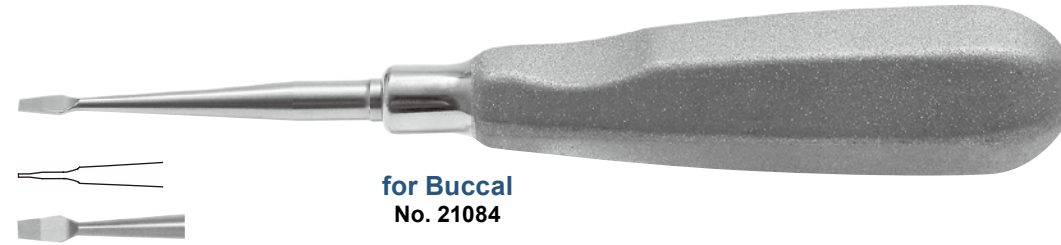




## Metal Core Removing Driver

- \*Two this "Metal Core Removing Driver" works excellently for removing metal core safely and effectively.
- \*Less stress to dentin by the equal torque from lingual and labial side.
- \*Available for wide part of the tooth as long as the two "Metal Core Removing Driver" can be approached in parallel.
- \*Only 0.4mm thickness of tip part for less cutting metal core.
- \*Avaible even though the heght of the dentine is not equal.

[ Clinical Movie ]



**for Buccal**  
**No. 21084**



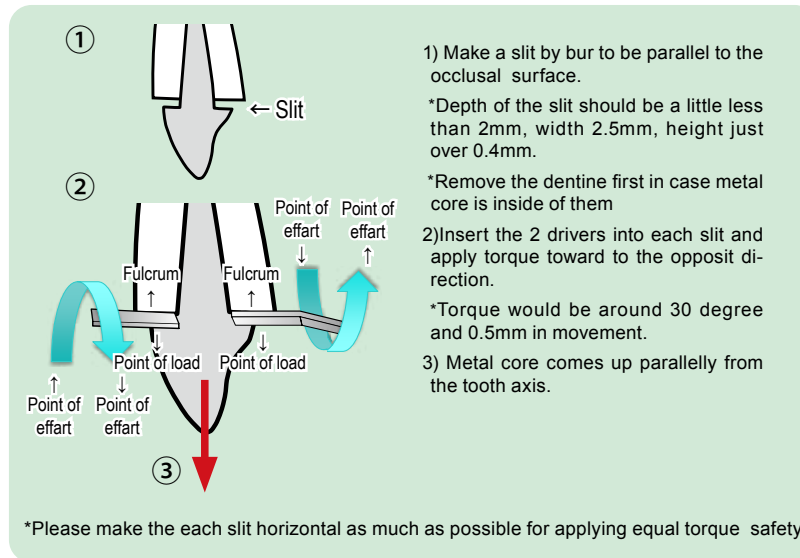
**for Lingual**  
**No. 21085**

\*Thickness / 0.4mm  
\*Width / 2.5mm

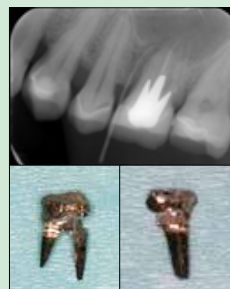
\*\*"DDT-S" marking applied with "for Buccal" one and "DDT-C" with "for Lingual".



\*\*"15 degree angle" is designed for "Metal Core Removing Driver for Lingual" to approach lingual side in parallel with labial one without contacting the opposing teeth. Putting equal torque toward the direction of tooth axis from lingual and labial side avoids the breakage of the root.



[Example of removing the split metal core.]



## Removing Driver

- \*Remove prosthesis by leverage.
- \*Surface preparation has been performed at the tip for the skid.

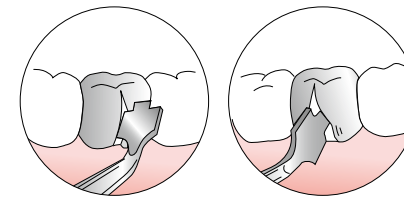


**Str.**  
**No. 21073**



**Cvd.**  
**No. 21074**

\*Thickness / 0.4mm



\*A tip opens right and left.





## Metal Core Removing Pliers

\*Remove a metal core securely and safely.

[ Clinical Movie ]



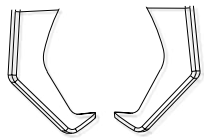
No. 21069



Size / 160mm

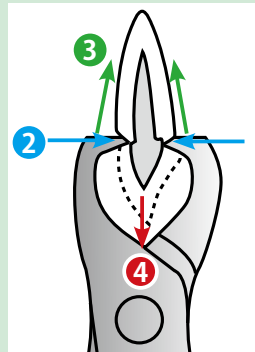
\*Width of edge part / 3.5mm

\*This unique angle of the edge part makes metal core uplift only by grabbing handle.



- \*Inserted spring prevents from putting exceeded power onto handle while operation.
- \*120mm long handle and the angle of tip part enable to approach to the molar part easily.
- \*The compact tip prevents from contacting adjacent tooth for comfortable operation.

-How to Use-



1) Make a slit onto the both labial and lingual margin part of metal core and the each slit should be approached to post part.

\*\*Carbide Bur FG"(Removal) #1557,#1558,#1958 those match with this remover are recommended.

- 2) Adjust the tip into the slit and slightly grab the handle.
- 3) Force to the center of tooth is occur.
- 4) Metal core is come off.



## Crown Splitting Pliers

\*Designed for quick and comfortable removal of crown. Also able to remove crown on mobile tooth.

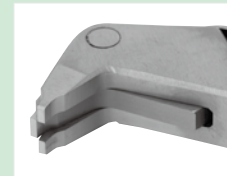
[ Clinical Movie ]



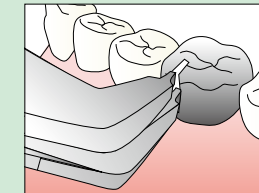
No. 18593



\*Thickness / 0.9mm  
\*Width / 7mm



-How to Use-



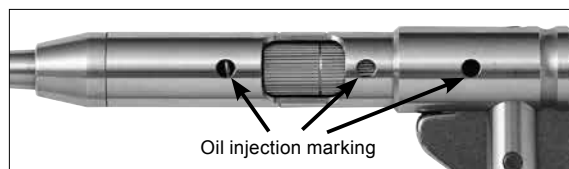
- 1) 1.2mm to 1.5mm slit is put into a crown with a bur. (For Molars: Put a slit on mesial angle area of buccal side to the middle of occlusal surface.)
- 2) Apply the tip of the instrument at a slit and handle is grabbed, a tip will open right and left and a crown will separate.



Autoclavable  
up to **135°C**

\*Able to adjust impulse strength.

No. 21010



\*Pour oil regularly

-How to wear tip-

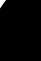


\*The instrument is held with one hand and the other hand is used to secure the instrument at the margin of the crown to be removed.

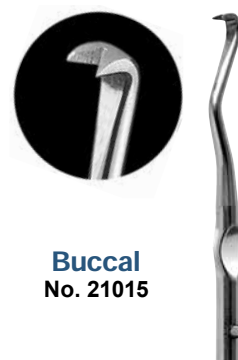


**-Remover Tip-**

\*Used for both "Automatic Crown Remover Set" and "Inlay Crown Remover L Set", "Inlay Crown Remover Set".



**Wedge**  
No. 21014



Autoclavable  
up to **135°**

**Contents** L Handle / Remover Tip W, S

No. 21018

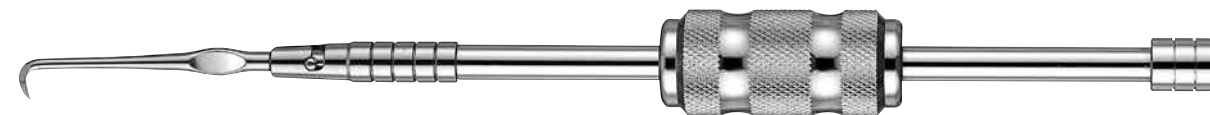


No.	Description
21019	Inlay Crown Remover L Handle

Autoclavable  
up to **135°C**

**Contents** Handle / Remover Tip W, S

No. 21020



No.	Description
21021	Inlay Crown Remover Handle

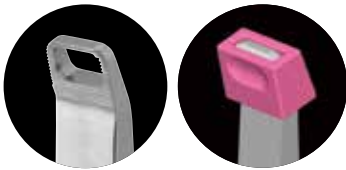
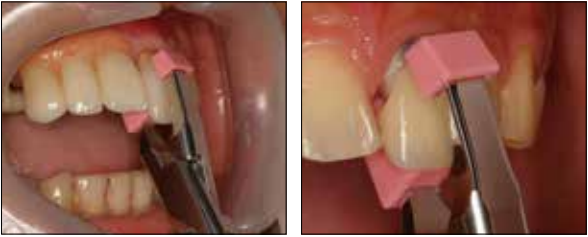


Contents

Main body / for U.A. Tip (10 ea.)

\*You can remove a try-in crown on upper anterior teeth, without leaving a scar or damage on them.  
 \*It is effective for removing ceramic crowns, hybrid-ceramic crowns, and others, to which need to pay special attention in order not to break or make a scar.

No. 21080

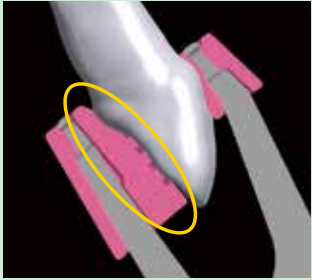


\*This flexible tip fits with a variety of tooth surface and it makes holding stable.



\*Hold the cervical contour of the crown. The tip of the hall wraps the cervical contour, and holds it stable. Hole of tip part holds the height part softly and the silicon tip grips surface stably.


PAT.P



\*This flexible tip fits with a variety of tooth surface and it makes holding stable.



\*Grooving is applied in opposite direction of operation to avoid slip.

 \*Please do not hold margin part of crown. Holding thin parts such as the margins of crown, especially ceramic or resin one, may occur breakage. Do not apply excessive force because it might happen breakage or scars on the crown, and other risks. So apply moderate force, and treat it slowly.

\*Material (Pink tip) / Si

Size / 135mm

Individual Parts

for U.A. Tip  
 No. 90459  
 (10 ea.)

## Crown Removing Pliers Professional

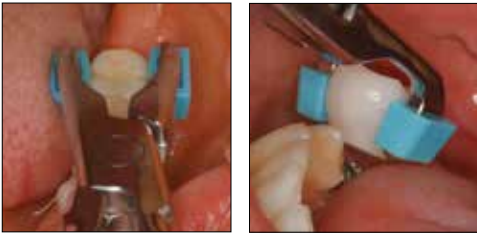


Contents

Main body / Tip (10 ea.)

\*You can remove a try-in crown on upper anterior teeth, without leaving a scar or damage on them.  
 \*It is effective for removing ceramic crowns, hybrid-ceramic crowns, and others, to which need to pay special attention in order not to break or make a scar.

No. 21079



Size / 160mm


Individual Parts

Tip  
 No. 90455  
 (10 ea.)

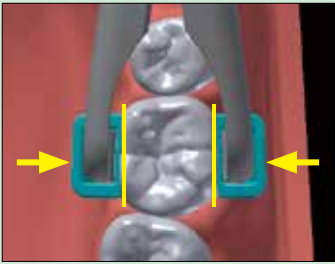


\*This product holds the height part softly.  
 Hole of tip part holds the height part softly and the silicon tip grips surface stably.

PAT.6299023

 \*Please do not hold margin part of crown. Holding thin parts such as the margins of crown, especially ceramic or resin one, may occur breakage. Do not apply excessive force because it might happen breakage or scars on the crown, and other risks. So apply moderate force, and treat it slowly.

\*Material(Blue tip) / Si



\*Tips are designed to be parallel when it holds crown.  
 \*This great feature enables Dr.'s to hold crown with stability.

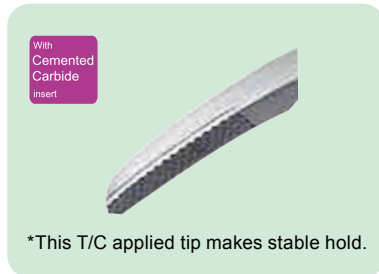


## Crown Gripper T/C



\*Suitable for removing temporary crown or applying try-in crown.

No. 21083



Size / 165mm



\*This scissors type pliers is easy to open and close with less stress.



\*This narrow handle makes it possible to feel the tip during operation as the handle is moderately flexible. It decreases the risk of breakage of crown.



\*Unlike hook type one, this gripper is easy to approach molar teeth and hold them with stability.